

# H-bridge

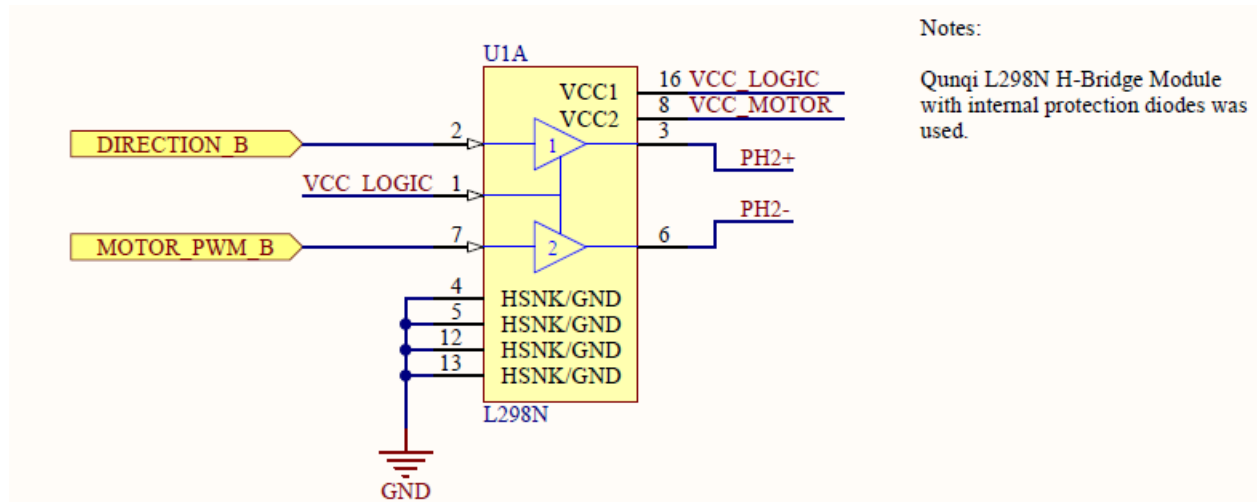


Figure 1: H-bridge Circuitry in Altium, for one motor

In this H-bridge circuit, the most important part is to make sure we can supply enough current. Note that this L298N is a dual motor driver board module, which already has diodes built in for inductive kickback, so let's focus on the current requirement.

The H-bridge is capable of outputting 4A current, and our motor coil resistance is 10Ω. We have two motors and at most we are driving them at 12V, therefore the total current is:

$$I_{tot} = 2 * \frac{12V}{10\Omega} = 2.4A < 4A \quad (1)$$

so our L298N dual motor driver board can handle both of our motors at stall current.